

The product program offers a wide range of Rexnord multiflex chains and case conveyor chains. These chains are intended for single lane product handling in a variety of applications.

## Features

### Multiflex Chains

These chains use a unique pivot to connect the hinge pin with the chain link. In standard side-flexing chains the pin and hinge have to deal with horizontal rotation, due to the sideflexing of the chain in the curve, and with vertical rotation of the hinge, when moving over the sprocket. The pivot uncouples these movements, as the hinge pin is only involved in the rotations because of the chain links moving over the sprocket. The pivot can rotate inside the chain link, allowing sideflexing in a curve. Due to the pivot, multiflex chains are ideally suitable for running through multiple curves.

### Armor Clad

The 1700 multiflex chains are also available with a hardened steel cover, the Armor Clad AC 1700 K. Because of this cover the chain is very suitable to convey parts with a high temperature that could damage a plastic chain surface. The steel cover gives the chain an excellent wear life, to make it suitable for part handling in automotive and similar applications

### Safety

The ZeroGap 1765, 1775, 1785 and 2565 multiflex chain have a unique top plate design. The chain surface always stays closed when the chain is running through a curve or over a sprocket. Both chains are commonly used in packaging and automotive industry.

### Case conveyor Chains

These chains have a very robust design, making them ideally suited for tough applications, such as case and crate handling. They are very open to deal with the often abrasive debris in these kinds of applications. The conveyor design for these chains can be very simple, resulting in a very economic solution for the sometimes very long distances empty or full crates and cases have to be conveyed in a production line.

### Pin design

Both Multiflex and Case Conveyor chains have chain links characterized by two legs. The pins have a special design to prevent opening up of these link legs. This results in a high allowable working load.

### Corner discs

For multiflex and some sideflexing slatband chains, corner discs can be used to reduce the friction in the curves, allowing a multitude of curves within one conveyor.

The use of corner discs is mainly found in conveyors with low-speed part handling in dairy applications, automotive part handling, tobacco industry, etc. The N880 drive corner disc with a toothed contour is used to drive the chain, integrating sprocket and curve function in the corner disc. This means that no return section for the chain is needed, making the conveyor design more simple and economic. In this kind of conveyor design however the amount of pitch elongation due to wear that can be absorbed is limited. The disc is mounted on the drive shafts by means of a clamping device, for which standard machine components can be used.

The carry disc is used in the upper part of the conveyor, contacting the chain in the normal position when it is conveying products. The return disc is used in the return part of the conveyor, contacting the chain when it is in the upside-down position. The ball bearing types of corner discs are recommended for high-speed and high-load applications; ball bearings are not included. In all other applications corner discs with thermoplastic bushings can be used. An open corner disc is mounted on the shaft which needs to run through the disc. A closed corner disc is mounted on top of the shaft. Some closed versions, such as 880BO, offer the ability to break out a diaphragm in the closing cap.



## Programme

Multiflex and case conveyor chains are available in the following executions:

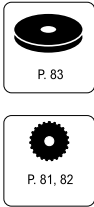
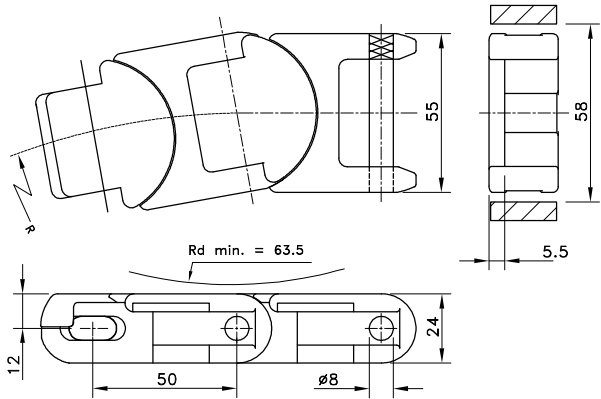
Rexnord Multiflex Chains	
1765	ZeroGap 50 mm pitch chain without gaps if sideflexing or running over a sprocket; low noise and long wear life
2565	ZeroGap 76 mm pitch chain without gaps if sideflexing; heavy duty execution in wear resistant polyamide
1757	1.5" pitch chain with unique top plate design, ideal for extruded aluminum modular conveyor designs, commonly used for part handling applications; also available with rubber top
1700	Basic 50 mm pitch chain when using corner disks; available in 3 versions: standard, with tabs and with hardened steel top surface (AC1700K)
1720	50 mm pitch chain for irregular cardboard containers; bidirectional and smooth edges
1775	1775 Zerogap 25mm pitch chain with unique zerogap plate design, ideal for critical product handling like delicate consumer packaging
1785	1785 Zerogap designed with a heavy-duty 2-inch (48 mm) pitch. This chain can be used in a variety of industrial applications.
Case Conveyor Chains	
CC 600	Standard chain; available in straight running and sideflexing executions
CC 631	Standard chain with higher links; available in sideflexing execution; can be supplied with pusher
CC 1400	Reinforced chain; available in straight running and sideflexing executions
CC 1431	Reinforced chain with higher links; available in sideflexing execution
BSM2755	The 2755 Series Chain is designed for heavy load side-flex applications which require a combination of high-strength and robustness

## Application

Chain Type	Standard Stable Products	Small Parts & Unstable Products	Large & Heavy Products (industrial)	Wide Products	Bi-directional Conveyors	Abrasive Parts Conveying	Inline Conveyors	Crate Conveying	Finger Safety
1700									
AC 1700									
1757									
1765 ZeroGap™									
1775 ZeroGap™									
1785 ZeroGap™									
2565 ZeroGap™									
CC 600/631/1400/1431									
BSM2755									

Optional Best choice

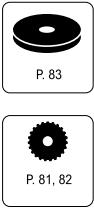
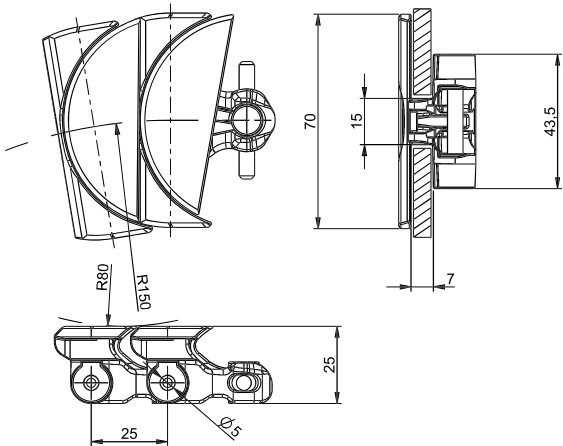
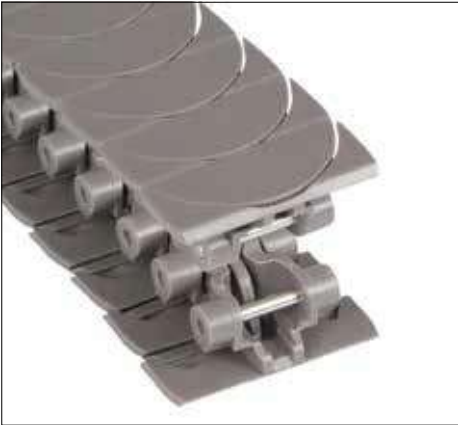
1765 ZeroGap™



Chain Type	Code Number	Link Width		Weight	Working Load (max.)	Backflex Radius (min)	Sideflex Radius (min)
		mm	inch				
HP-Acetal							
HP1765 ZG-55MM	10177518	55.0	2.17	1.46	2670	63.5	125
BWX-Polyamide Composite							
BWX1765 ZG-55MM	10373979	55.0	2.17	1.46	2670	63.5	125

Standard length: 3.05 m - 10 feet (61 links).

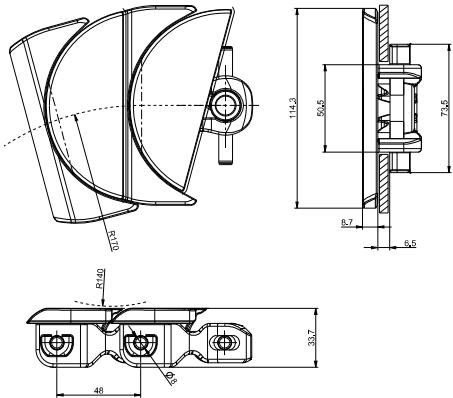
1775 ZeroGap™



Chain Type	Code Number	Link Width		Weight	Working Load (max.)	Backflex Radius (min)	Sideflex Radius (min)
		mm	inch				
HP-Acetal							
HP1775 ZG-70MM	10177523	70.0	2.76	1.05	1000	80	150

Standard length: 5 m – 16.4 ft (200 pitches).

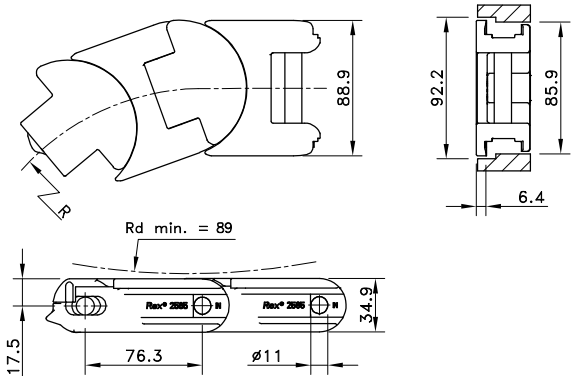
1785 ZeroGap™



Chain Type	Code Number	Link Width		Weight	Working Load (max.)	Backflex Radius (min)	Sideflex Radius (min)
		mm	inch				
XLG-Acetal							
XLG1785 ZG	10186170	114.3	4.5	2.54	2500	140	170

Standard length: 2.40 m - 7.87 feet (50 links).

2565 ZeroGap™ Heavy Duty

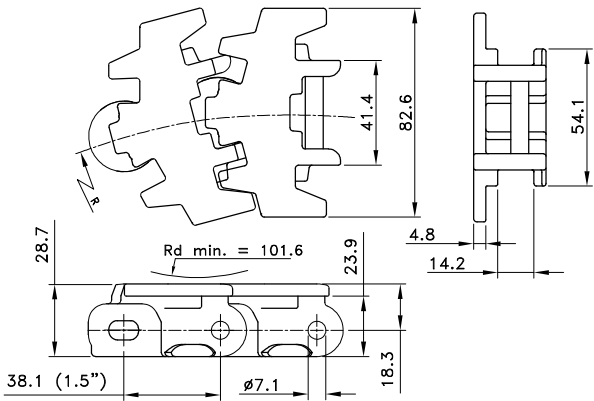


Chain Type	Code Number	Link Width		Weight	Working Load (max.)	Backflex Radius (min)	Sideflex Radius (min)
		mm	inch				
BWV-Polyamide							
BWV2565 ZG-3.5IN SS PINS	10145689	88.9	3.50	2.67	10675	89	241

Standard length: 3.048 m – 10 feet (40 links).



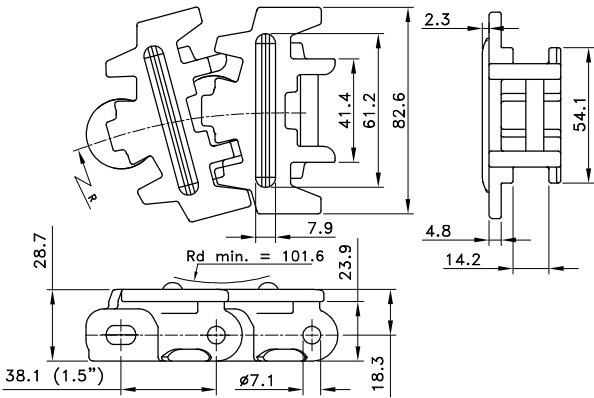
# 1757 TAB



Chain Type	Code Number	Link Width		Weight	Working Load (max.)	Backflex Radius (min)	Sideflex Radius (min)
		A					
		mm	inch				
LF-Acetal							
LF1757TAB-3.25IN SS PIN	10144646	82.6	3.25	1.48	1735	102	152

Standard length: 3.048 m - 10 feet (80 links).

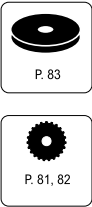
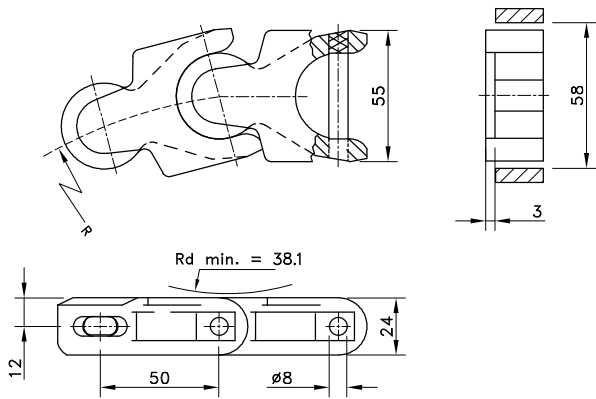
## 1757 TAB with Rubber



Chain Type	Code Number	Link Width A		Weight	Working Load (max.)	Backflex Radius (min)	Sideflex Radius (min)
		mm	inch				
HP-Acetal							
HP1757TAB SG-3.25IN 1SGD60 T1P ZN PIN	10145209*	82.6	3.25	1.48	1735	102	152

Standard length: 3.048 m - 10 feet (80 links).

\* Minimum order quantity 30.48 m – 100 feet.

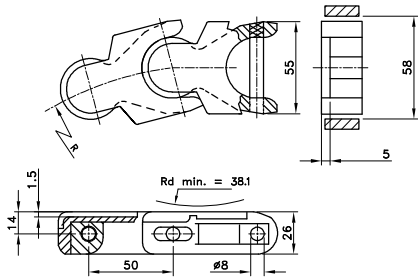


Chain Type	Code Number	Link Width A		Weight	Working Load (max.)	Backflex Radius (min)	Sideflex Radius (min)
		mm	inch				
LF-Acetal							
LF1700-55MM SS PIN	10156539	55.0	2.17	1.26	2670	38.1	140
WLF-Acetal							
WLF1700-55MM SS PIN	10145092	55.0	2.17	1.26	2670	38.1	140
HP-Acetal							
HP1700-55MM	10374004	55.0	2.17	1.26	2670	38.1	140
Acetal with Hardened Steel Top Plates							
LF1700K AC-ZN-55MM ZN PIN	10374002	55.0	2.17	60	2670	38.1	140

Standard length: 10 m - 32.8 feet (200 links).

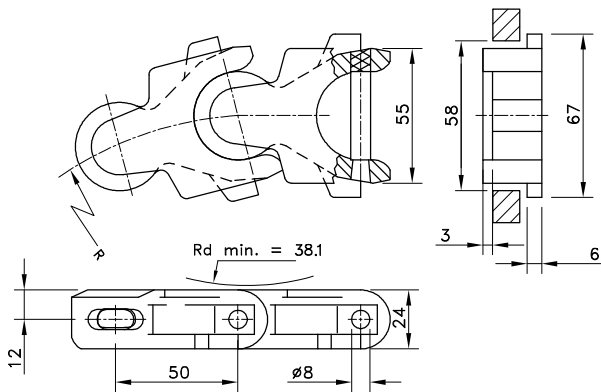


AC (Armor Clad) Execution



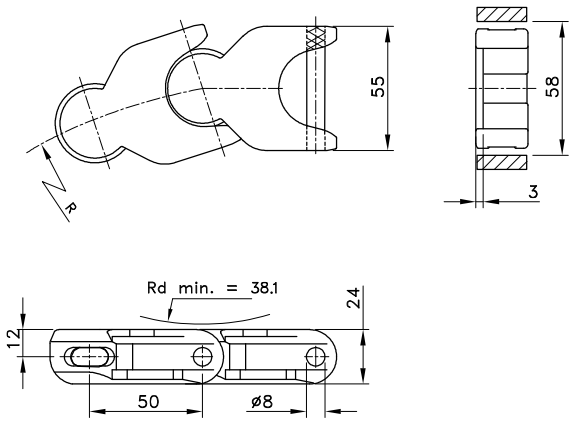
AC (Armor Clad) Execution

1700 TAB K



Chain Type	Code Number	Link Width		Weight	Working Load (max.)	Backflex Radius (min)	Sideflex Radius (min)
		A					
		mm	inch				
WLF-Acetal							
WLF1700TAB K-55MM	10183027	55.0	2.17	1.30	2670	38.1	140

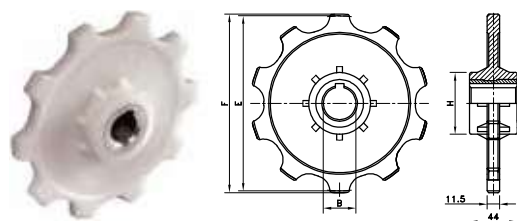
1720



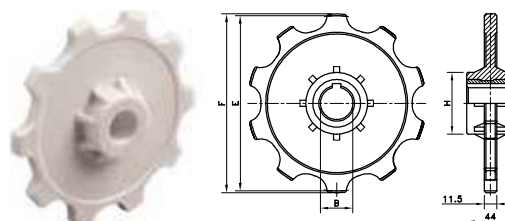
Chain Type	Code Number	Link Width		Weight	Working Load (max.)	Backflex Radius (min)	Sideflex Radius (min)
		A					
		mm	inch	kg/m	N (21°C)	mm	mm
HP-Acetal							
HP1720-55MM	10373999	55.0	2.17	1.26	2600	50	140

Standard length: 10 m - 32.8 feet (200 links).

## N1700



## N1700



Sprocket Type	Code Number	Number of Teeth	Bore B	Pitch Diameter E	Outside Diameter F	Width (Teeth Ring)	Hub Width	Hub Diameter H
			mm	mm	mm	mm	mm	mm

### N1700 - Classic Plastic Sprockets, Injection Moulded, Brass Hub

Metric Bores								
N1700-10T_24MM_1KW_PA	10334287	10	24	161.8	165.1	11.1	44.0	57
N1700-10T_25MM_1KW_PA	10334289	10	25					
N1700-10T_30MM_1KW_PA	10334290	10	30					

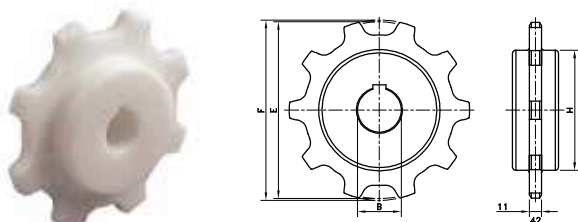
For Multiflex chain series: 1700, 1710, 1713, 1720, 1765.

### NX 1700 - Classic Plastic Idler, Injection Moulded

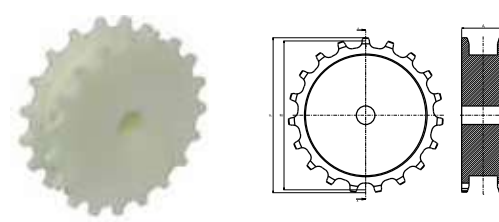
Metric Bores								
N1700-10T_25MM_I_PA	10177513	10	25	161.8	165.1	11.1	43.0	50

For Multiflex chain series: 1700, 1713, 1720, 1765.

## KU1700



## KU1775



### KU 1700 - Classic Plastic Sprockets, Machined

Metric Bores								
KU1700-8T_20MM_P_PA	10298178	8	19	130.7	132.8	11.1	42.0	79
KU1700-8T_25MM_1KW_PA	10330978	8	25					
KU1700-8T_30MM_1KW_PA	10331380	8	30					
KU1700-10T_20MM_P_PA	10298179	10	19	161.8	165.1	11.1	42.0	110
KU1700-10T_25MM_1KW_PA	10330980	10	25					
KU1700-10T_30MM_1KW_PA	10331382	10	30					
KU1700-13T_20MM_P_PA	10298180	13	19	209.0	215.2	11.1	42.0	158

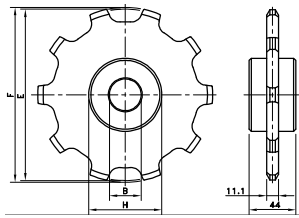
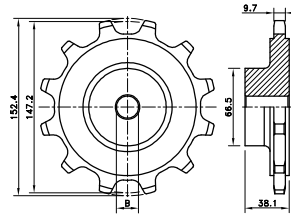
For Multiflex chain series: 1700, 1713, 1720, 1765

### KU 1775 - Classic Plastic Sprockets, Machined

Metric Bores								
KU1775-19T_19MM_P_PA	10283942	19	25	151.9	157.9	7.4	43.8	112.9

For Multiflex chain series: 1775.



**ZN1700****CI1757**

Sprocket Type	Code Number	Number of Teeth	Bore B	Pitch Diameter E	Outside Diameter F	Width (Teeth Ring)	Hub Width	Hub Diameter H
			mm	mm	mm	mm	mm	mm

**Classic Zinc Plated Steel Idlers - ZN 1700****Metric Bores**

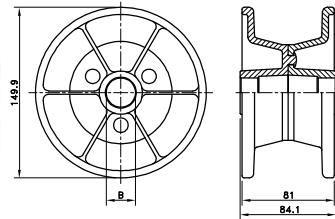
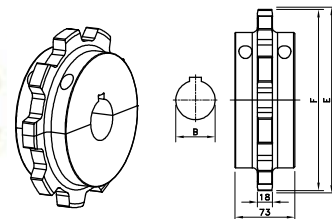
ZN1700-10T_20MM_I	10365357	10	20	161.8	165.1	11.1	44.0	69.0
ZN1700-12T_20MM_I	10365358	12	20	193.2	196.1			

For Multiflex chain series: 1700w, 1710, 1713, 1720, 1765.

**Classic Semi-Steel Sprocket, Excentered Hub - CI1757****Inch Bores**

CI1757-12T_3/4IN_RSB_B	10014778	12	0.750"	147.2	152.4	9.7	38.1	66.5
------------------------	----------	----	--------	-------	-------	-----	------	------

For Multiflex chain series: 1757

**NT1757****KUS2500****Classic Plastic Idler Drum, Injection Moulded - NT1757****Metric Bores**

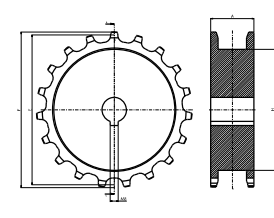
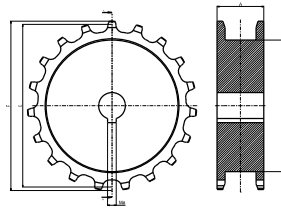
NT1757-10.5T_1IN_I_LF	10015525	10	25	-	149.9	81	84.1	38.1
-----------------------	----------	----	----	---	-------	----	------	------

For Multiflex chain series: 1757.

**Split Plastic Sprockets, Injection Moulded – KUS2500****Metric Bores**

KUS2500-9T_50MM_1KW_PA	10370621	9	50	222.8	221.2	18.0	73.0	165.0
------------------------	----------	---	----	-------	-------	------	------	-------

For Multiflex chain series: 2565.

**KUS1775****KUS1780****Split Plastic Sprockets, Machined – KUS1775****Metric Bores**

KUS1775-19T_25MM_1KW_PA	10365398	19	25	151.9	157.9	7.4	43.8	112.9
-------------------------	----------	----	----	-------	-------	-----	------	-------

For Multiflex chain series: 1775

**Split Plastic Sprockets, Machined – KUS1780****Metric Bores**

KUS1780-9T_40MM_1KW1SS_PA	10365384	9	40	140.34	146	9	70	-
---------------------------	----------	---	----	--------	-----	---	----	---

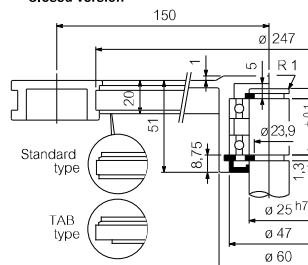
For Multiflex chain series: 1785.

## ND1700 B

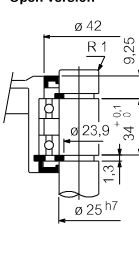


□ Carry

Closed version

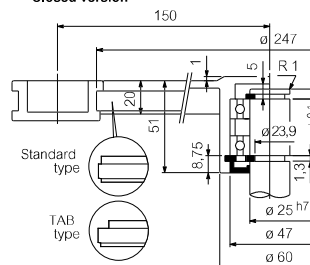


Open version

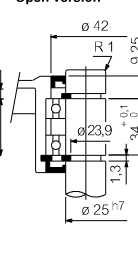


□ Return

Closed version



Open version



Corner Disc Type	Code Number	Execution	Open/ Closed	Outside Diameter	Weight
				mm	kg

Corner Discs including bearings For Plastic Multiflex Chains 1700 K, 1720 K and 1765 Zerogap

CORNERDISC 10IN 1700 CLOSED CARRY PA	10177515	carry	closed	247	0.70
ND1700BO-TR	10365369	carry	open		
CORNERDISC 10IN 1700 CLOSED RETURN PA	10177514	return	closed		
ND1700BO-RET	10365366	return	open		

Corner Disc including bearings For TAB Chain

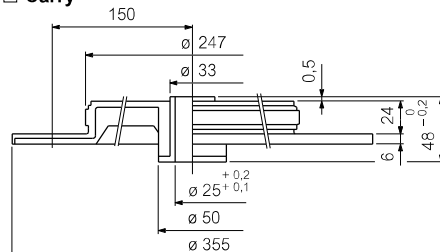
CORNERDISC ASSY 1700TAB CLOSED CARRY PA	10322155	carry	closed	247	0.70
ND1700TBO-TR	10365370	carry	open		
ND1700TBC-RET	10365367	return	closed		
ND1700TBO-RET	10365368	return	open		

- prepared for 2x single race ball bearing (25x47x12 mm)

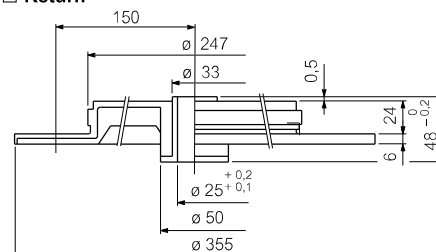
## ND1700 FL



□ Carry



□ Return

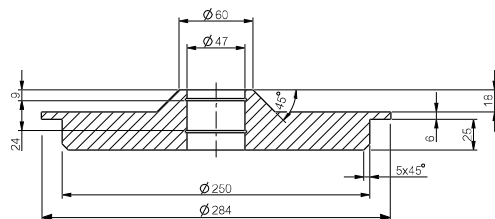


With Flanges (Ø355)

ND1700FL-TR	10365379	carry	open	247	0.92
ND1700FL-RET	10365343	return	open		

- plastic bushing diameter ø25 mm.

## ND1755



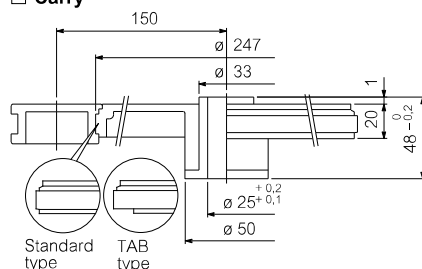
With Flanges (Ø355)

ND1755	10285932	carry	open	250	0.92
--------	----------	-------	------	-----	------

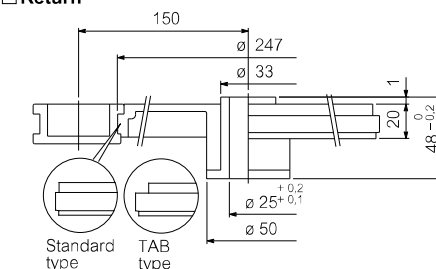
## ND1700



□ Carry



□ Return



Corner Disc with Bushing (Non TAB)

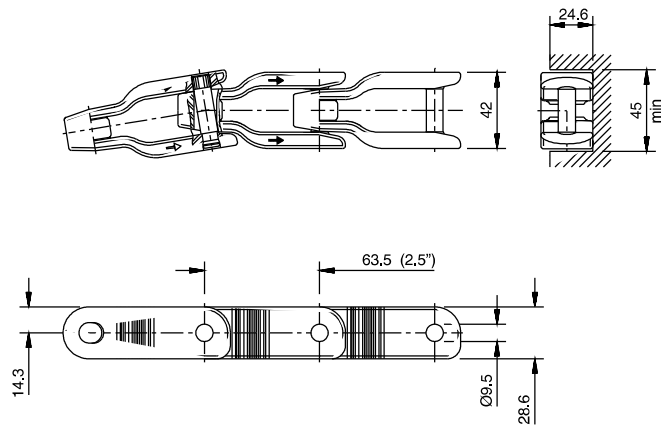
ND1700T-TR	10365363	carry	open	247	0.47
ND1700-TR	10365362	return	open		

Corner Discs with Bushing TAB

ND1700T-RET	10365365	carry	open	247	0.47
ND1700-RET	10365364	return	open		

- plastic bushing diameter ø25 mm.

## Straight Run without TABS

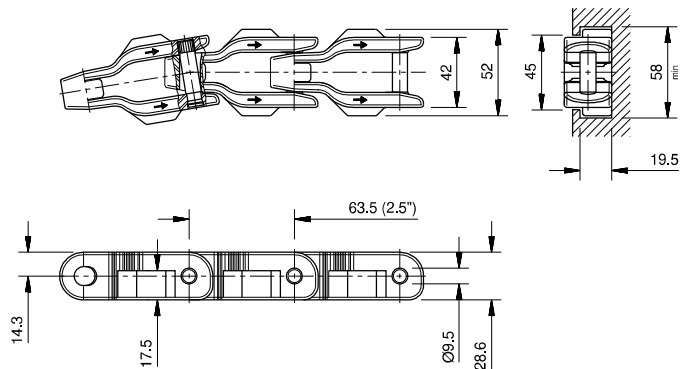


Chain Type	Code Number	Link Width A		Weight	Working Load (max.)	Backflex Radius (min)	Sideflex Radius (min)
		mm	inch				
LF-Acetal							
LF600-42MM	10139129	42.0	1.66	1.20	3950	50	457
NC-Acetal							
NC600-42MM	10139130	42.0	1.66	1.20	3950	50	457
WPP-Polypropylene							
WPP600-42MM	10375143*	42.0	1.66	1.00	1975	50	457

Standard length: 3.048 m - 10 feet (48 links).

\*Ask customer service for minimum order quantity.

## Sideflex with TABS

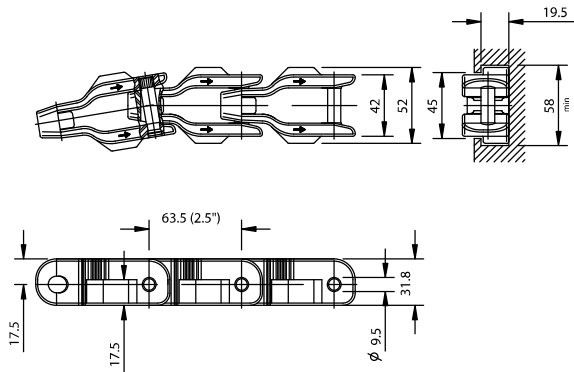


Chain Type	Code Number	Link Width A		Weight	Working Load (max.)	Backflex Radius (min)	Sideflex Radius (min)
		mm	inch				
LF-Acetal							
LF600TAB-42MM	10375137	42.0	1.66	1.25	3950	50	457
NC-Acetal							
NC600TAB-42MM	10375141	42.0	1.66	1.25	3950	50	457
WPP-Polypropylene							
WPP600TAB-42MM	10375142*	42.0	1.66	1.03	1975	50	457

Standard length: 3.048 m - 10 feet (48 links).

\*Ask customer service for minimum order quantity.

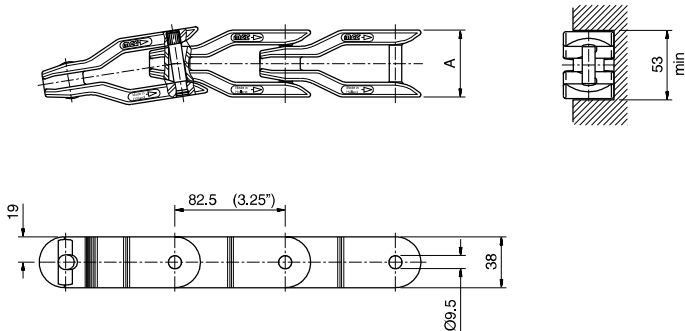
Sideflex with Tabs with Higher Link



Chain Type	Code Number	Link Width A		Weight	Working Load (max.)	Backflex Radius (min)	Sideflex Radius (min)
		mm	inch				
LF-Acetal							
LF631TAB-42MM	10139125	42.0	1.66	1.35	3950	50	457
NC-Acetal							
NC631TAB-42MM	10375130*	42.0	1.66	1.35	3950	50	457

Standard length: 3.048 m - 10 feet (48 links).  
\*Ask customer service for minimum order quantity.

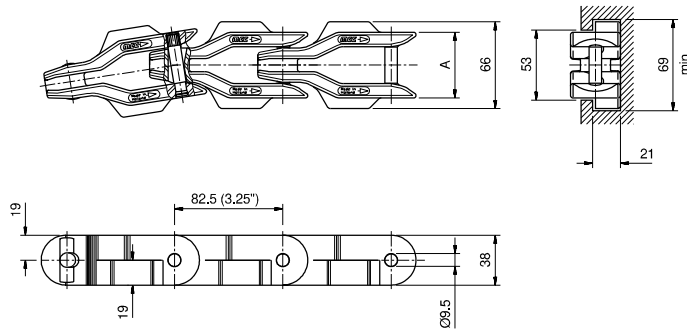
Straight Run Reinforced without Tabs



Chain Type	Code Number	Link Width A		Weight	Working Load (max.)	Backflex Radius (min)	Sideflex Radius (min)
		mm	inch				
LF-Acetal							
LF1400-50MM	10139124	50.0	1.97	1.70	6500	50	660
NC-Acetal							
NC1400-50MM	10375123	50.0	1.97	1.70	6500	50	660

Standard length: 3.053 m - 10 feet (37 links).

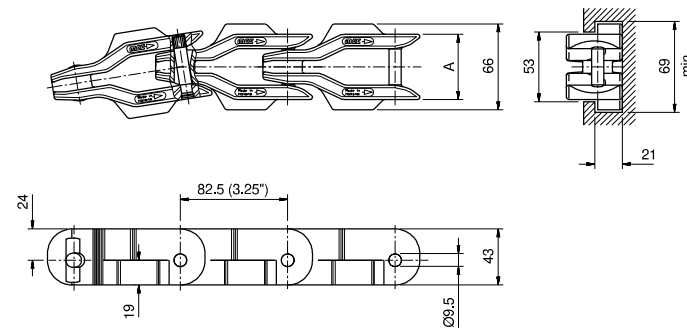
## Sideflex Reinforced with TABS



Chain Type	Code Number	Link Width A		Weight	Working Load (max.)	Backflex Radius (min)	Sideflex Radius (min)
		mm	inch				
LF-Acetal							
LF1400TAB-50MM	10139123	50.0	1.97	1.75	6500	50	660
NC-Acetal							
NC1400TAB-50MM	10375122	50.0	1.97	1.75	6500	50	660

Standard length: 3.053 m - 10 feet (37 links).

## Sideflex Reinforced with Tabs with Higher Link



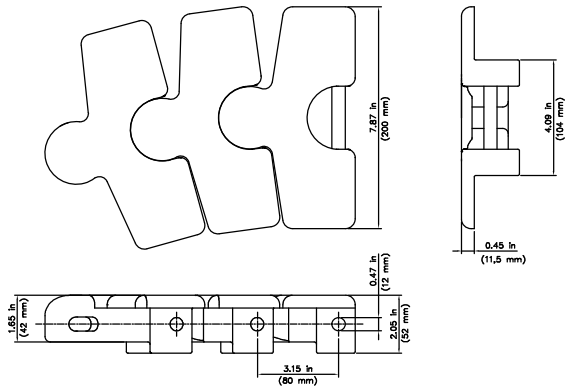
Chain Type	Code Number	Link Width A		Weight  kg/m	Working Load (max.)  N (21°C)	Backflex Radius (min)  mm	Sideflex Radius (min)  mm
		mm	inch				
LF-Acetal							
LF1431TAB-50MM	10375147	50.0	1.97	2.02	6500	50	660
NC-Acetal							
NC1431TAB-50MM	10375150	50.0	1.97	2.02	6500	50	660

Standard length: 3.053 m - 10 feet (37 links).

\* Ask customer service for minimum order quantity of CC1431 TBL chains.



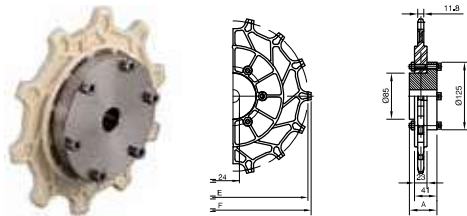
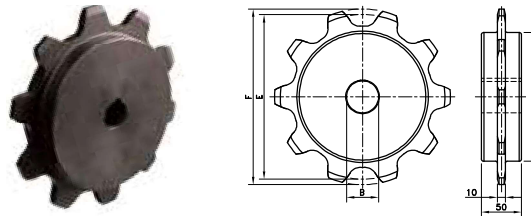
BSM 2755 Series TableTop Chain



Chain Type	Code Number	Plate Width		Weight	Working Load (max.)	Sideflex Radius (min)	Backflex Radius (min)	Plate Thickness
		mm	inch					
BSM2755-200MM	10374922	200	7.87	6.1	12.500	23.9 / 600	4.9 / 125	0.45 / 11.5

Standard length: 1.52 m – 5 ft (19 links).



**CC600/631****KU600**

Type	Code Number	Number of Teeth	Bore B	Pitch Diameter E	Outside Diameter F	Hub Width A
			mm	mm	mm	mm

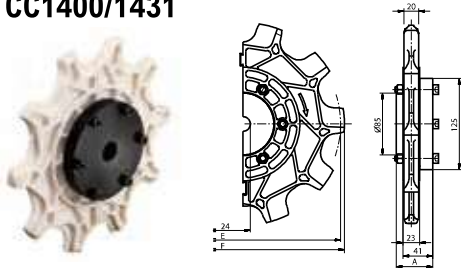
**Semi-Split Sprockets for CC600/631**

Sprocket Ring Set						
SPLIT SPROCKETR.SET CC600 Z=10	10359856	10	-	205.5	209.4	-
SPROCKET RING CC600-14T	10139158	14	-	285.4	289.8	-
Carbon Steel Hub						
CH CC-C 24MM_I	10359844	-	24	-	-	50
Stainless Steel Hub						
CH CC-S 24MM_I	10359843	-	24	-	-	50

The split sprocket rings and unsplit hubs are supplied separately, so that the hub doesn't need to be replaced in case of wear of the sprocket rings.

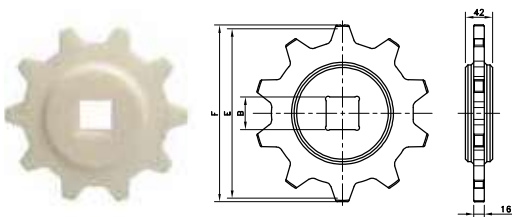
**Classic Sprockets for CC600/631**

Metric Bores						
KU600-6T_20MM_P_PA	10298157	6	20	127.0	128.0	50
KU600-8T_20MM_P_PA	10298154	8	20	165.9	177.7	
KU600-10T_20MM_P_PA	10298155	10	20	205.5	219.3	

**CC1400/1431****Semi-Split Sprockets for CC1400/1431**

Sprocket Ring Set						
SPROCKET RING CC1400-10T	10139157	10	-	267.0	278.4	-
Carbon Steel Hub						
CH CC-C 24MM_I	10359844	-	24	-	-	50
Stainless Steel Hub						
CH CC-S 24MM_I	10359843	-	24	-	-	50

The split sprocket rings and unsplit hubs are supplied separately, so that the hub doesn't need to be replaced in case of wear of the sprocket rings.

**KU2755****Classic Sprocket for BSM 2755**

KU2755-10T_40MM_S_PA	10401412	10	40	258.9	274	42
KU2755-10T_40MM_1KW_PA	10400243	10	40	258.9	274	42
KU2755-10T_50MM_S_PA	10360824	10	50	258.9	274	42